

Mandana Polymer Industrial Group

Manufacturer of Liquid waterproofing membrane Epoxy Adhesive, Epoxy Flooring part making epoxy & Polymer Detergent

Waterproof sealant wp80
Waterproof sealant p40



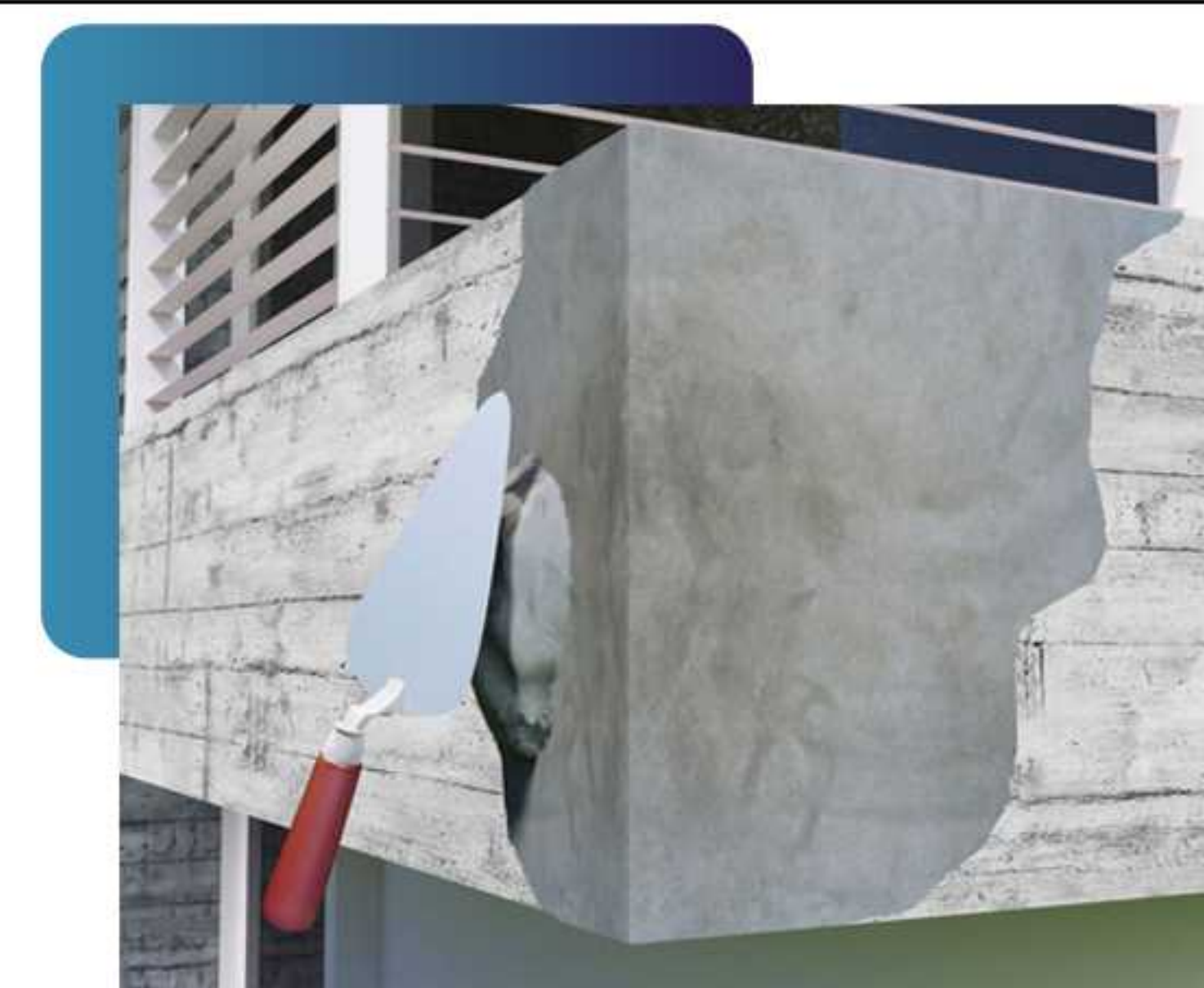
To seal and underlay areas that need waterproofing, based on the specific requirements either one-component wp80 or two-component p40 insulation could be used. These materials are easy to apply and provide exceptional strength, preventing any future ruptures and preparing the surface for waterproofing. Using these materials for substructures is cost-effective, and once the substructure is in place, it allows for further waterproofing, stonework, or tiling. These products are fully resistant to erosion, abrasion, and various environmental conditions

Types of sealants and substructures

Type	Application	Feature	Performance Tool
WP80-800	<ul style="list-style-type: none"> Filling small voids and smoothing the surface Sealing ceramic tiles Covering larger holes, seams, and deep gaps 	Polymer/one component	Drawing pen, putty spatula, and
Sealant P40	<ul style="list-style-type: none"> Filling thin seams under 2mm deep Suitable for foundational use Precision work on seams 	Polymer/one component	Putty spatula

Features and applications

Application	Feature
<ul style="list-style-type: none"> High temperature resistance Fully protection against small cracks Fully protective against corrosion and wear Resistance to water penetration Environmental compatibility: completely eco-friendly, no pollution Usable in wet environments Excellent adhesion to mineral materials High impact resistance Strong initial bonding Stable and durable in aquatic environments Seamless and crack-free finish after drying, including hairline cracks Quick drying time Does not deteriorate with regular water contact Fast drying speed Affordable price 	<ul style="list-style-type: none"> Concrete surfaces Cement surfaces Wood and metal surfaces Izogam and Bitumen Ceramic and mosaic tiles Historic and ancient buildings Prefabricated cement and concrete components Concrete bridges New and old buildings Sanitary waterproofing Swimming pools Facades and walls



End users

- Waterproofing installers
- Waterproofing users
- Facilities

Physical and functional characteristics

Two-component waterproofing (P40)	
Mixing %	1300gr of powder + 700gr of solution. *Usage amounts may vary by up to 20% depending on the installer's technique.
Drying and curing time	4-18h
Environmental conditions at the time of application	15-30°C Dry weather during application.
Optimum operating temperature range	-50 to 120°C
Packaging (kg)	2
Coverage amount/kg	The amount used varies depending on the size of the gaps, seams, and joints.

Substructure waterproofing WP80-800	
Mixing %	One component
Drying and curing time	4-18h
Environmental conditions at the time of application	15-30°C Dry weather during application.
Optimum operating temperature range	-50 to 120°C
Packaging (kg)	4, 10, 25
Coverage amount/kg	The amount used varies depending on the size of the gaps, seams, and joints.

Maintenance and safety considerations

- Store in a dry place away from sunlight, water, and rain
- Keep at temperatures above 5°C
- In the primary packaging, the storage period at 15-30°C is more than 12 months
- Products are safe but wear gloves and protective clothing when using them. If it gets in your eyes, wash them out with water

Warranty and After-Sales Service

This product comes with a one-year performance guarantee and ten years of after-sales service